

POST-GRADUATE

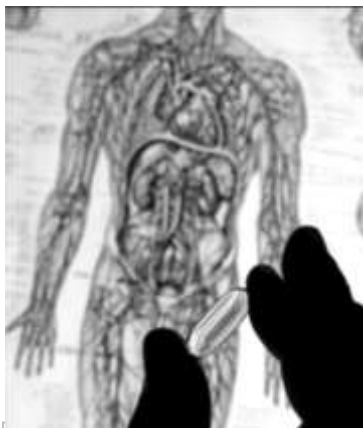
School of Healthcare

FACULTY OF MEDICINE AND HEALTH



UNIVERSITY OF LEEDS

MSc Advanced Practice



Fully funded places for NHS Employees

These programmes are currently **fully funded for NHS Employees** and are very popular and often oversubscribed. We advise you to plan your training as early as possible with your manager.

Deadline is 29 June.

Who is the programme for?

This part-time programme is aimed at UK based practitioners such as nurses, pharmacists, radiographers, midwives and other healthcare professionals, who have clinical practice access.

Why study this programme?

If you are already working as an advanced practitioner or aspire to become one then this programme will allow you to develop your skills further.

Objectives of the programme

This programme will help you to gain the practical and intellectual skills to challenge accepted wisdom when you are looking to develop practice and to meet the advanced practice core competencies by:

- Providing effective healthcare.
- Improving the quality and health outcomes.
- Evaluation and research.
- Leading and developing practice.
- Developing self and others.
- Working across professional and organisational boundaries.
- Innovation and changing practice.

Timeframe for completion

PG Dip - normally 2 years
Masters - normally 3 years

Programme content

The MSc Advanced Practice has four compulsory modules focusing on advancing practice, innovation and research.

Compulsory modules

Issues and Concepts of Advancing

Practice - 15 credits;

Advancing Practice - Clinical based Learning - 30 credits;

Research Methods - 15 Credits;

Dissertation - 45 credits.

The optional module selection includes clinical examination, leadership, evidence-based practice, ethics and law, independent and supplementary prescribing, support for learning in practice and many more. Visit our website for the full list.

What qualifications are gained?

Master of Science in Advanced Practice (180 credits).

Assessment

As well as the process listed in the introduction, the research proposal/ dissertation is compulsory. Student preparation for assessment will be part of the modular content.

Entry Requirements

- Health or Science-related degree at 2:1
- Registration with a health professional body or equivalent (eg NMC, HPC)
- A current autonomous practice role or potential to develop one.

Accreditation for Prior Experiential Learning (APEL) is available for this course.

Applicants who do not meet these criteria should contact the Programme Manager.

Student selection

Eligible students are required to attend for an interview which is conducted by the programme manager and member of the module team

How to apply

For an application form please contact:
admissions@healthcare.leeds.ac.uk
T: 0113 343 1347

Fees

The fees for this degree programme for non-NHS staff are £10,000 per year full-time and £5,000 for part-time.

Programme manager



Professor Claire Hale is the Dame Kathleen Raven Professor of Clinical Nursing at the University of Leeds and the Director of the Institute for Innovation in Professional Practice in the School of Healthcare.

Professor Hale has a long standing interest in practice development and has led the development of this multi-professional MSc in Advanced Practice.

Contact Professor Claire Hale,
c.a.hale@leeds.ac.uk
www.healthcare.leeds.ac.uk

Optional Modules

Examples of modules which may be offered

Accrediting Learning from Study Days	General Medical Ultrasound
Assessment Appraisal and Evaluation for supervisors of pre registration Pharmacy	Guided International Procedures
Balance, Control, Dysfunction and Management across the ages	Health Needs Assessment
Brady Cardio devices and Rhythm Management	Independent and Supplementary Prescribing for Nurses and Midwives and pharmacists
Breast Ultrasound	Innovation and Evaluation
Clinical Examination	International Leadership and Management Practice
Clinical Sociology: Employing Sociology in Health Care Practice	Interpreting and Reporting Mammographic Images
Commissioning for Health and Social Care	Interpreting Biochemistry and Haematology for Healthcare Practice.
Complex Care Pathway: Pregnancy, Birth and Puerperium	Leadership - Health and Social Care
Contemporary Issues Relating to Child Health Care	Management of Patient's Clinical Conditions
Contemporary Stress Management	Managing Health and Social Care
Counselling Theory (in Healthcare Practice)	Mental Health Policy and Practice
Developing Partnerships with Medicine Takers	Pathophysiology
Drug Therapy for the management of respiratory disease and infections	Pharmaceutical Care (for core conditions)
Drug Therapy in Cardiovascular Disease	Preparation of Supervisors of Midwives
Drug Therapy in Women's Health and Endocrine Conditions)	Professional Issues and application in Counselling and Psychotherapy
Ethics in contemporary Health and Social Care	Programme Design and Delivery: For Supervisors of Pre-registration Pharmacy Training
Evidence Based Practice	Psychological Aspects of Illness Science and Technology (Mammography) Service Development within Healthcare Stress Vulnerability in Mental Health
Evidence Evaluation and Practical Application	Psychotherapy and Society
First Trimester Obstetric Ultrasound	Screening and Diagnosis for Breast Cancer
Fundamentals of Science and Technology of Medical Ultrasound	Support for Learning in Practice
General Cardiac Ultrasound	Theory and Practice of Counselling and Supervision